

# NEOWTA



Founded 1990

NorthEastern Oklahoma WoodTurners Association

**AAW** OFFICIAL CHAPTER  
AMERICAN ASSOCIATION  
OF WOODTURNERS

## PRESIDENT'S MESSAGE • BILL EFFRON

As the month of May quickly passes by, the COVID numbers continue to fall, vaccinations are readily available, masks are disappearing and for many life is returning to a new normal. NEOWTA is also returning to a new normal. May will mark our last completely Zoom general meeting. The wood carvers began meeting again on the fourth Thursday of April. Their next meeting is the May 27 at 5:30.

Meetings in June will resume in the building with a few minor changes. While not requiring mask be worn and social distancing be observed; masks will be optional and we will try and stand 3 feet apart. The HVAC fans will be running to help with air exchanges. If you are not ready to be out and among folks, we will be providing a Zoom feed of the meeting.

In order to get the building ready, we are having a Morning Cleaning-Up on May 22 from 9 AM till about 11 AM. If we have 5-6 volunteers to help wipe down counters, clean the bathrooms, and sweep up, we'll be ready to meet.

Learn to Turn is beginning again in May. We have six anxious students on the list to begin on the 27<sup>th</sup>. Each class will begin at 5:30 and run till about 9 PM. We have scheduled a second class beginning on July 15. There are several openings available and there is talk about a fall class as well. The same suggestions relating to COVID will be in place.

See you in June.

Bill



## MAY GENERAL MEETING

The next NEOWTA General Meeting will be held on Tuesday, May 18th at 6:30pm.

While not Fully confirmed, the May meeting, via Zoom, will include one or maybe two shop tours and a presentation on finishing. Finishing always seems to be one of those topics with a lot of ideas and even more opinions on what's the best way. There will be time to ask question and share ideas at the end.

## AMAZON SMILE

Do you shop at Amazon?

Earn cash donations for NEOWTA in four easy steps by shopping at Amazon Smile:

Log onto [smile.amazon.com](https://smile.amazon.com)

Type in Northeastern Oklahoma Woodturners Association under “pick your own charitable organization”

Click on “Search”

“Select” Northeastern Oklahoma Woodturners Association to start earning 0.5% from Amazon Smile on eligible purchases for our club.



You shop. Amazon gives.

It's that EASY! There is no charge to you or NEOWTA and you are still eligible for your Amazon Prime perks.

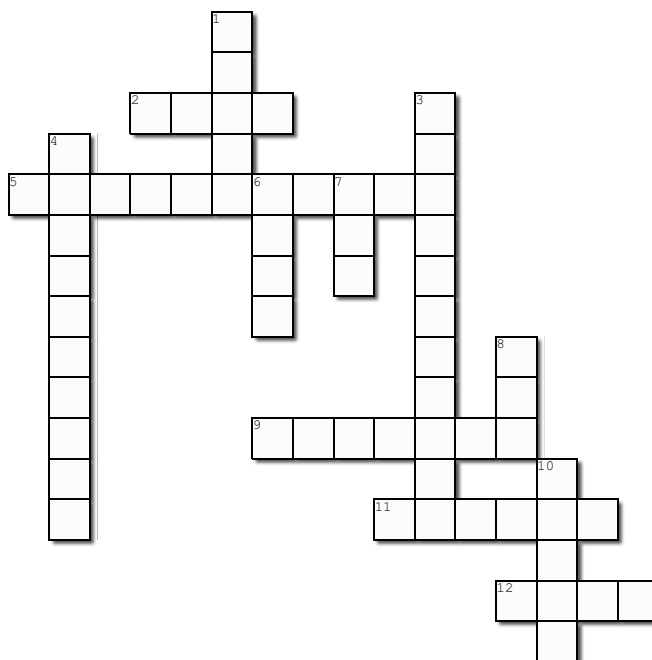
Remember to shop at [smile.amazon.com](https://smile.amazon.com) to generate Amazon Smile donations for NEOWTA.



## CROSSWORD PUZZLE

### May Crossword Puzzle

Complete the crossword puzzle below



Created using the Crossword Maker on TheTeachersCorner.net

#### Across

2. One of the largest Symposiums in the Southern United States.
5. Online websites and applications that enable the sharing of ideas, thoughts, and information; for example Facebook & Instagram
9. A SIG that Betty Zumwalt leads to help members add details to their work.
11. You can call one of these to help you with your woodturning.
12. With this, all are helped

#### Down

1. Polishing system that can be used to give wooden projects a fast but spectacular finish
3. A place to make all kinds of purchases and NEOWTA receives a small donation at no charge to you.
4. This is what makes NEOWTA successful!
6. Commonly worn today outside your home that should be worn when woodworking to protect your respiratory system
7. Dee Bater would like you to check one of these out each month.
8. A lively step dance or a tool that makes a woodworking process easier and quicker
10. The type of pen that Jerry Robertson uses to colorize his lidded boxes.

Answers on page 8.

## POWER CARVING SIG

Power Carving at the Clubhouse! **May 25th at 5:30p.m.** For all those that would like to come and join in the fun. Bring your power carving equipment and PPE, ie: face mask and hearing protection. We would like to invite all NEOWTA members who would like to learn more about carving, pyrography, and other texturing effects, to come out and learn how and what equipment is needed. There will be extra equipment to use before you purchase to make sure you get the equipment that you need to do the work you want to accomplish. We have plenty of room to social distance. See you there. - **Betty Zumwalt.**



## BUILDING TO REOPEN

Building to Reopen for the General Meetings on June 15.

NEOWTA will reopen the building on June 15<sup>th</sup> for the monthly general meeting. The building will be open by 6:00 PM with the meeting starting at 6:30 PM. A few things to remember related to COVID –

- ✱ Vaccinations for those attending in person are suggested.
- ✱ Masks are strongly requested to be worn.
- ✱ Social distancing of 3 feet is suggested.
- ✱ Limit hand shaking – Try fist bumps or elbow touches to say Hello.
- ✱ Zoom will be available for those that do not wish to attend in person.

As this will be our first in person meeting in several months, please be patient as we work through any issue that may come up.

## CALENDAR OF EVENTS

DATE	PROGRAM
Tuesday, May 18th, 6:30pm	TBA - ZOOM
Tuesday, May 25th, 5:30pm	Power Carving SIG - In Person
Tuesday, June 1, 6:30pm	Board Meeting - In person and ZOOM
Tuesday, June 15th, 6:30pm	TBA - In person and ZOOM
Tuesday, June 22nd, 5:30pm	Power Carving SIG - In Person
Tuesday, July 6th, 6:30pm	Board Meeting - In person and ZOOM



## APRIL SHOW AND TELL

Our April meeting was held on ZOOM and attended by about 30 members.

We were presented a short video on how to turn a hollow vessel with a chainsaw on the lathe. Yes it was as dangerous looking as it sounds.

Then we had a tour of **Dean Miller's** shop. Very clean and organized. Great tour.

We finished up our meeting with a show and tell. We had a number of members that had something to show. It was a great learning experience for all. Thanks for sharing.

Here are a few of the items shared with us:

**Arnold Mundt,**

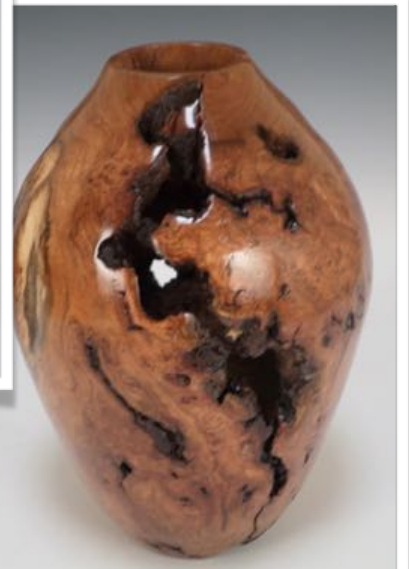


There's nothing spectacular about this small bowl but I would like to show it in hopes that somebody can tell what kind of wood it's made from. The wood came from the clubhouse last spring after an email said that some cherry was available. There was cherry but there was also this wood with dark gray and black sap wood. The bowl is just over 7" diameter. I colored it with General Finishes dye stain for a red to orange to yellow fade. It is finished with tung oil and wipe on poly.

Can you identify the species of wood?



**Pat Collins,**



APRIL SHOW AND TELL

*Jim Eagleton,*





## APRIL SHOW AND TELL

**George Nobles,**



I turn all my acrylic pens with a spindle roughing gouge all my wood pens with a skew using peeling cuts

The lidded box is large about 6 x 8. The knot hole was filled with stained saw dust

The rustic box elder turned 4/18/20 was a challenge. Moved out of round, torn grain ( a problem with box elder) sanded with 60 for an hour then thru 400.



The Tari bowls are ambrosia maple measuring 3 x 5



## APRIL SHOW AND TELL

### ***Jerry Robertson,***

This is a lidded box. It was turned from a 3" x 9" baseball bat blank. The final piece is about 2 7/8 inches in diameter and about 5 inches high. It is beaded with 72 - 1/8 inch beads that were wood burned around the circumference of the box. The circumferential lines between beads were burned with a fine (guitar string) steel wire while the piece was turning at about 3500 RPM. The box pattern of beads was colored using Copic pens. Prior to coloring, the wood was sealed with 2 light coats of shellac, followed by 2 light coats of Matte

Krylon acrylic. A very sharp scalpel removed extraneous Copic, Inc., which from time to time was outside the block it belonged. The pattern is unique. It is 9 beads high by 18 beads wide. It is critical that the bead width of the pattern can divide into the total number of beads around the perimeter (72) an even number of times (In this case,  $72/18$  equals 4) for the pattern to meet on each round.

Starting from the bottom set of 9 beads, the 2nd set of 9 beads is a mirror reflection of the bottom sets continuing up the 3rd set is a mirror image of the 2nd set, and so on. The final 9 bead set has the last 4 bands on the top of the piece.

Following linking, editing, and removal of extraneous ink 2 coats of UV resistant Krylon acrylic and 2 coats of Krylon triple thick were used to protect the color. This is still a work in progress. The bottom bead and tenon will be removed and the design wood burned into the top.





## VOLUNTEERS NEEDED

Membership in an organization doesn't mean just showing up to a meeting or class, taking in knowledge, and leaving. Each member should give back to the organization. Some perform activities behind the scenes and others are up front. BUT, the bottom line is that more hands make for lighter work. And, we need to get more hands involved. Now is the time to step up.

Please Take an Active Part in **YOUR** Club!

Remember ...

You Get Out of an Organization What **You** Put Into It!

Want to Volunteer? Contact Your Officers

See Page 17 for Contact Information

## YOUR PROJECT PHOTOS

Everyone loves Show & Tell after our demonstrations! As Almeda Robertson says "I love Show & Tell—It's my favorite part of the meeting!" We only have Show & Tell at our meetings every 4 months. We would like to show off your work on the Website and in the Newsletter each month.

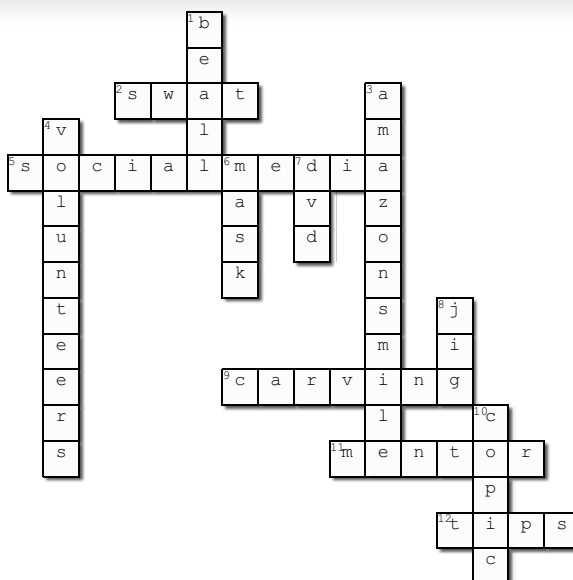
We ask that you send photos, you can send as many as you want, to the club mailbox [newsletter@neowta.com](mailto:newsletter@neowta.com) by the last Thursday of each month. This allows plenty of time for the photos to be added to the newsletter. Please also send a description—type of wood, size, finish, any special information.

Use the instructions below to help you send the photos. Don't forget to send relevant data about your project(s) when sending photos. The more information you provide, the more we can add when they get added to the website and then to the newsletter.

Send the Photo by Email to the club email: [newsletter@neowta.com](mailto:newsletter@neowta.com). Add any additional information in the email that tells others about your project.

Text the Photo to Arthur Barber cell (918-671-2437) along with information. Remember, he may not know your cell number so be sure to identify yourself!

## MAY CROSSWORD PUZZLE ANSWERS



Created using the Crossword Maker on TheTeachersCorner.net



## TIPS AND TRICKS

### Tip from **Jim Evans:**

Not my idea & not sure where I first saw this tip. Instead of using a bundle of straws to show grain orientation to woodturners I use them to help me vacuum. Since I never seem to have all the cabinets and drawers closed when I turn or sand, they fill up quickly.



When I finally get around to cleaning up I jam the bundle of straws into the shop vac hose. Small parts are left behind and the dust is gone.

### Tip from **George Nobles:**

Expanding the functionality of "Cole jaws"

Cole jaws are a convenient and quick way to mount a bowl or hollow form turning to a lathe. Rubber grips clamp onto the work piece as a lathe mounted scroll chuck closes into the work. The Cole jaws may also function in expansion mode by insertion of the grips into the work piece and expanding the scroll chuck until a satisfactory friction grip is achieved. Many turners prefer the use of a customized jamb chuck to accomplish the same purpose. And for good reason. Cole jaws take time to set up or may not be readily configurable to a given work piece. Further, in compression mode, it may be impossible to grip the work piece securely with the grip rubbers mounted flush to the Cole jaws. There are after market solutions offered, but the same results can be achieved by a visit to a hardware store and less that \$30.00.



Purchase eight 3.00" bolts with threads matched to your Cole jaws. (You may find it convenient to take one of the jaws to insure a proper match to the thread pitch and bolt measurement.) Purchase eight rubber pads with a molded mounting hole that will accept the the 3.00" bolt and stop at the bolt head. Mounted into the Cole jaws, the now "extended" grips can be set to a height appropriate for the outside of most bowl profiles. The same extended grips may be used alone as a jamb chuck or, by wrapping the entire configuration in a material such as sheet foam for added friction grip.



The "enhanced" grips are great for the final turning of a bowl bottom and, depending upon the external bowl profile, allow for a very secure work piece unlikely to work free of the grips. The flexibility of the grips allows you to "re-visit" a long ago finished piece for, say, a new bottom profile or to refinish the piece on the lathe.

For Nova Cole jaws Ace Hardware carries part #403176 bolts and 7/8" rubber pads.



## CLUB VIDEO LIBRARY

Librarian, **Dee Baxter**, wants you to check out the DVD library at our next meeting in May and on the members web site to see what is available for your selection and to check it out. There is a wide variety of turning DVD's available for inspiration or help in skill enhancement.

You can check out 3 DVD's per month

DVD's checked out must be returned the following month. Late fee - \$5.00 assessment per DVD per month.

Enjoy the DVDs. You can watch them more than once!

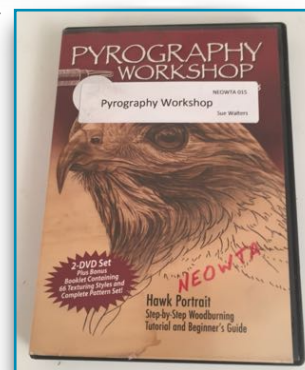
We have several DVDs that have checked out for a significant period. Please look around the house, locate those DVDs and give Dee a call. If you would like to trade DVDs, Dee will be happy to work with you. Our extensive library remains open for business. A list of the books and DVDs are on the website. If you'll contact Dee directly, he will either mail a DVD or even arrange for in-Tulsa delivery. Dee's contact information is 918/407-5045 or [plow55@aol.com](mailto:plow55@aol.com).



## VIDEO OF THE MONTH

Learn the craft of woodburning in an expert's workshop as you stand alongside one of today's finest woodburning artists, Sue Walters!

- **2-DVD set** contains 110 minutes of everything you need to start woodburning like a pro
- **16- page color booklet** with patterns for the hawk project, photos of the finished piece, and reference photos for more than 60 textures
- **Beginner-friendly** with a 20-minute introduction to help you discover the simple techniques of pyrography
- **10 lessons** that culminate in creating a stunning pyrography hawk project



In this intimate 2-DVD set, you'll receive private lessons on the ancient art form of pyrography from an expert!

New woodcrafters will benefit from a 20-minute introduction to the basics of pyrography that details the tools and wood required to pursue this skill, complemented by a series of 10 detailed lessons that result in the creation of a gorgeous woodburned red-tailed hawk.

In addition to the live footage, a bonus 16-page accompanying booklet includes patterns for the hawk project and a photo of the finished piece. The booklet also includes invaluable reference photography showing more than 60 textures created with just four pyrography tips.

Ideal for the beginner, or for any woodburners looking to improve their skills, *Pyrography Workshop with Sue Walters* is like having a private tutoring session with an amazing pyrographer.

Pyrography Workshop with Sue Walters has everything you need to start woodburning like a pro!

Call or email Dee Baxter to reserve your copy to start learning today!

Dee's contact information is 918/407-5045 or [plow55@aol.com](mailto:plow55@aol.com).

## MENTORING PROGRAM

Our mentoring program is one of the unique benefits of our club. Our mentors can help with basic to complex turning and teach safety along the way. This is a great way to start out or hone your skills with complex tasks taught by turners skilled in specific areas of turning. Our mentors are volunteers and are dedicated to sharing information on all facets of woodturning. Rest assured however, that all of our mentors are easy to work with. Most often the mentor opens his/her shop to the applicant at a mutually agreed upon time and schedule. So how does the mentoring program actually work? The program is flexible. Just contact a mentor below and arrange a time and date to meet. Are you a new turner? I want to make sure we meet your needs!



### ***Are you a Beginning Woodturner?***

How to use NEOWTA mentoring Program:

Email [Arthur Barber](#), or talk to him at a meeting, and describe your skills or needs. He will do his best to get you matched up with a mentor. Mentors and mentored must be members of NEOWTA. Let me introduce you to our Mentors and their skill set they bring to the table:

- ★ **Patrick Collins** 918-886-5524 Tulsa, OK - [pjc21549@windstream.net](mailto:pjc21549@windstream.net) - All kinds of turning help.
- ★ **John Scott** 918-231-5856 Tulsa, OK - [johnscott1059@cox.net](mailto:johnscott1059@cox.net) - Basics, bowls, boxes and hollow forms.
- ★ **Roger Tice** 918-321-3210, Sapulpa, OK - [roclock1@att.net](mailto:roclock1@att.net) - Segmented turning.
- ★ **Brad Glock** 918-213-9751, Bartlesville, OK - [bradglock@yahoo.com](mailto:bradglock@yahoo.com) - Basics, platters bowls, boxes, hollow forms and limited carving.
- ★ **Guy Timmons** 918-855-9000 Tulsa, OK - [gwtimmons@cox.net](mailto:gwtimmons@cox.net) - All kinds of turning help.
- ★ **James Adams** 918-886-5524 Pawnee, OK - [pawneejames@gmail.com](mailto:pawneejames@gmail.com) - Bowls, bracelets.
- ★ **Arlen Wiens** 918-213-5166 Bartlesville, OK - [arlen.wiens@gmail.com](mailto:arlen.wiens@gmail.com) - Basic - tools, spindle work, Bowls, Lidded Boxes, Hollow Forms...
- ★ **Betty Zumwalt** 918-346-7193 Tulsa, OK - [bettyzumwalt@affordableassistance.com](mailto:bettyzumwalt@affordableassistance.com) - All kinds of turning help

If you would like to volunteer to be a mentor, please send an email to [Arthur Barber](#) with your name, phone number, email address and list the kind of turning you can help with.

## BEADS OF COURAGE

Making boxes for the Beads of Courage program at the Children's Hospital at St. Francis Hospital is an ongoing community service project for our club.

Beads of Courage is a program for children who are seriously ill with cancer or other serious disease. The beads help them tell their treatment stories through the colored beads they receive for medical procedures, treatment milestones, and acts of bravery. Children can amass hundreds of beads during their treatment and typically string them together to form necklaces.



Our project is to turn lidded boxes for the children to use to store their beads and necklaces. Club members are encouraged to turn boxes that are between 4 and 6 inches in diameter and 6 to 8 inches tall. Box design is up to the club member. Be creative and remember these boxes are for kids. We would like some reference to Beads of Courage to be incorporated in your design. The club will have ceramic beads with the BOC logo available for your use. In addition, members are asked to include their name and the club's name, "NEOWTA", to the bottom of the boxes.

For more info contact Betty Zumwalt – phone: 918-346-7193 email: [bettyzumwalt@affordableassistance.com](mailto:bettyzumwalt@affordableassistance.com)



## SWAT NEWS

The SWAT Board has officially announced that the SWAT Symposium for 2021 will take place on August 27-29!

The WACO Convention Center will have a restriction of 75% occupancy, so this will limit the number of attendees. It is recommended that you register ASAP to guarantee your admission to the Symposium.

Check out the SWAT web site for registration and any new updates. [www.swaturners.org](http://www.swaturners.org)

NEOWTA will be hosting one of the smaller rooms! We will need 2 volunteers per session to man the room. There will be 12 sessions. One volunteer will be running the video controls while the other will be the MC for the room. If you would like to volunteer to help or just want more information, contact [Arthur Barber](#).

SWAT will need volunteers to sell raffle tickets during the symposium. Contact [Arthur](#) for more information.

Below are the lead and regional demonstrators for SWAT 2021.

**Lead Demonstrators** - see the information [here](#).

Nick Agar - [About Nick Agar](#)

Jimmy Clewes - [About Jimmy Clewes](#)

Nick Cook - [About Nick Cook](#)

Scott Grove - [About Scott Grove](#)

Jeff Hornung - [About Jeff Hornung](#)

Joanne Sauvageau - [About Joanne Sauvageau](#)

Don Ward - [About Don Ward](#)

**Regional Demonstrators** - information [here](#).

Michael Alguire - [info](#)

Sally Ault - [info](#)

Dennis Belcher - [info](#)

Robert Blanford - [info](#)

Jim Bob Burgoon - [info](#)

Colin Chalmers

Rebecca DeGroot - [info](#)

Linda Ferber

Karen Freitas - [info](#)

Jim Hinze - [info](#)

Alan Lacer - [info](#)

Janice Levi - [info](#)

Sammy Long - [info](#)

Matt Monaco - [info](#)

Jeffery Neff

Cory White

Tim Yoder



### SWAT Family Programs

Whether you are a woodturner or not, there are plenty of things to do aside from watching shavings fly. The list of classes that family members can take grows each year. Some of the classes in past years include crochet (a lovely scarf), fusing glass (for jewelry), and paper crafting (handmade cards).

The content of the classes varies from year to year - and they just keep getting better.

There are multiple classes available throughout the day and some of them include field trips in Waco (quilt shop). Each day provides a myriad of opportunities to learn something new. You are even likely to leave with a few new craft pieces. You will certainly leave with new friends.

Every member of the family is welcome at SWAT. Younger family members can even learn to turn a pen from seasoned woodturners.

The Schedule of Classes for 2021 will be forthcoming soon.

## AMERICAN ASSOCIATION OF WOODTURNERS

### 2021 AAW Virtual Symposium

July 17-18, 2021

Plan to join us!



**You'll have a front-row seat** for the programs you've come to know and love and be able to enjoy them from the comfort and safety of your own home.

**AAW will use an enhanced virtual event software platform** to offer multiple concurrent live demonstration tracks, panel discussions, special interest topics, a trade show, Instant Gallery, live and silent auctions, drawings, and more. You'll have opportunities to engage with other attendees face-to-face, plan your sessions, or skip around – you decide. The only thing missing will be the handshakes and hugs from old and new woodturning friends!

#### Featured Demonstrations

**Learn from some of the world's best!** Featured woodturning demonstrations will include a variety of fascinating topics that appeal to a wide range of skill levels. AAW's handpicked roster of internationally known woodturning talent includes Nick Agar, Stuart Batty, Dixie Biggs, Trent Bosch, Bruce Campbell, Pat Carroll, Nick Cook, Rebecca DeGroot, Mark Dreyer, Art Liestman, JoHannes Michelsen, and Al Miotke.

#### Panels and Special Interest Sessions

**Get motivated and informed** by the Artist Showcase presentation, Professional Outreach Program (POP) panel discussions, Special Interest Topics, Women in Turning (WIT), and Youth and Educators sessions.

#### Instant Gallery and Instant Gallery Critique

**Gain insights, inspiration, and new ideas** by perusing attendee work submitted for the AAW Instant Gallery and by attending the Instant Gallery Critique moderated by the Professional Outreach Program (POP).

#### Trade Show

**Shop or browse the AAW's Virtual Trade Show** which showcases a wide variety of vendors who offer state-of-the-art woodturning lathes, accessories, tools, supplies, turning stock, and more. The exhibitor list includes Airbrushing Wood, Axminster Tools, Carter Products Inc., Cindy Drozda Woodturning Tools, D-Way Tools, HannesTool, LLC, John Jordan Woodturning, JPW Industries, Lyle Jamieson Woodturning, LLC, MDI Woodcarvers Supply, Woodturners Wonders, Woodturning Tool Store, Woodturning with Tim Yoder, and others.

#### Community Conversations

**Join informal special interest chats** both days and be able connect with like-minded woodturners to discuss your interests.

#### Auctions

Add to your collection – or just watch. AAW's Benefit Auctions will be streamed live online. So, regardless of where you live, you'll have a chance to buy that beautiful bowl, platter, or sculpture from your desktop, laptop, tablet, or mobile phone – or simply observe the action.

- Live Benefit Auction will take place the evening of **Friday, July 16.**
- Professional Outreach Program (POP) Live Benefit Auction will take place the evening of **Saturday, July 17.**
- AAW Silent Benefit Auction will accept bids throughout the event and the bidding will end **Sunday, July 18.**

Join us for this remarkable event. Registration opens soon.

## AAW SAFETY

### Personal Protection Equipment (PPE)

#### Face Shield

Having at least minimal protection in place to reduce the chances that these projectiles will reach and damage the eyes should be a common sense no-brainer for ANYONE who intends to stand at the lathe,



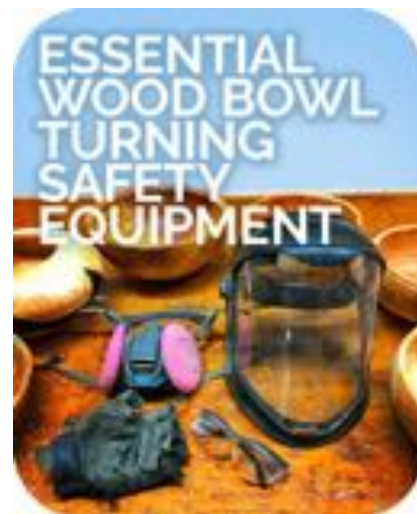
*It is advisable to select a face shield that is not simply a piece of plastic hanging from a headband, but one which includes lower face and jaw protection as well.*

#### Respiratory Protection

Another safety issue involving the use of personal protection equipment involves ensuring that the operator is adequately protected from fine wood dust carried in inhaled air. Since inhaled fine particulates can represent a significant health risk, particularly in repeated exposures over extended periods of time, it is particularly important that this aspect of woodturning safety be treated very seriously.

Installation of an efficient dust collection capability in the classroom workstation is recommended. Respiratory PPE involves specific devices that are used to eliminate or reduce the possibility of inhaling fine air-suspended particles deep into the lungs.

Face masks are recommended for protection from wood dust generated during sanding, this is the greatest respiratory health risk.



#### Hearing Protection



In general, woodturning at the lathe is a fairly quiet endeavor, especially when compared to running other wood shop machinery such as surface planers, jointers, miter saws, and table saws.

There are numerous kinds of hearing protection (Hearing Protection Devices, HPD) available in different designs. Some prefer an earmuff style hearing protector, with a spring-tension band that can be worn over the top of the head, behind the head, or even under the chin. Others prefer hearing protection that inserts into the outer ear canal as an ear plug which attenuates high noise levels before they reach the ear drum and inner ear anatomy.



# NEOWTA MEMBERSHIP



# NEOWTA

## 2021 Membership Application



New ( ) Renewal ( ) Check One

Annual Membership per Calendar Year (Jan - Dec): Individual \$55.00 ( ) Family \$90.00 ( )

Name \_\_\_\_\_

Address \_\_\_\_\_

City \_\_\_\_\_ State \_\_\_\_\_ Zip \_\_\_\_\_

Home Phone \_\_\_\_\_

Cell Phone \_\_\_\_\_

email \_\_\_\_\_

Spouse Name \_\_\_\_\_

Your Occupation: \_\_\_\_\_

Full Time ( ) Part Time ( ) Retired ( )

Are you a member of AAW? Yes ( ) No ( ) (If yes, Member No. \_\_\_\_\_)

How long have you been turning? \_\_\_\_\_

What kind of lathe do you have? \_\_\_\_\_

What is your skill level? Beginner ( ) Intermediate ( ) Advanced ( )

What would you like to see at our club meetings? \_\_\_\_\_

Are you willing to give a program? Yes ( ) No ( )

If yes, describe your program \_\_\_\_\_

Can we contact you to help with special events? Yes ( ) No ( )

Check the box if you do NOT want to be listed in the printed roster ( )

Would you be willing to be a Mentor? Yes ( ) No ( )

Signature: \_\_\_\_\_ Date: \_\_\_\_\_

*Make checks payable to: Northeastern Oklahoma Woodturners Association*

Send Check to:

NEOWTA  
c/o Phil Buchman, Treasurer  
5344 S 73rd East Ave  
Tulsa, OK 74145



( For Office Use )

Amount

Method

Date

Entered

## OTHER WOODTURNER CLUBS INFORMATION



**CENTRAL OKLAHOMA WOODTURNERS ASSOCIATION - COWA**  
[www.centralokwoodturners.com](http://www.centralokwoodturners.com)

**2nd Tuesday of each month. 6:30pm**

Metro Tech South Bryant Campus  
4901 S Bryant Ave, Oklahoma City, OK 73129

Douglas Lawrence, 405-751-7071, [douglawrence@att.net](mailto:douglawrence@att.net)



**OZARK WOODTURNERS CLUB**  
[www.ozarkwoodturners.com](http://www.ozarkwoodturners.com)

**2nd Saturday of each month. 1:00pm**

Lakeview City Hall  
14 Skyles Ln, Lakeview, Arkansas 72642

Edward Boiteau, 870-491-5622, [ebboiteau@gmail.com](mailto:ebboiteau@gmail.com)



**STATELINE WOODTURNERS**  
[www.statelinewoodturners.org](http://www.statelinewoodturners.org)

**2nd Saturday of each month. 9:00am**

Center for Nonprofits at St. Mary's  
1200 W Walnut St, Rogers, Arkansas 72756

Paul Taylor, 479-426-3007, [paulraytaylor@gmail.com](mailto:paulraytaylor@gmail.com)



**NORTHWEST OKLAHOMA WOODTURNERS ASSOCIATION - NOWA**  
[www.nwokwoodturners.com](http://www.nwokwoodturners.com)

**3rd Monday of each month. 6:30pm**

Hoover Building  
318 E Oxford, Enid, Oklahoma

Dwayne Colwell, 405-464-9798, [colwell@peoplepc.com](mailto:colwell@peoplepc.com)



**DALLAS AREA WOODTURNERS - DAW**  
[www.dallaswoodturners.com](http://www.dallaswoodturners.com)

**3rd Thursday of each month. 7:00pm**

13650 TI Blvd #101, Dallas, Texas, 75243

President - Tod Raines - 214-924-3748,  
[tod@woodturningtoolstore.com](mailto:tod@woodturningtoolstore.com)



**GOLDEN TRIANGLE WOODTURNERS**  
[www.goldentrianglewoodturners.org](http://www.goldentrianglewoodturners.org)

**1st Monday of each month. 7:00pm**

The Center For Visual Arts  
400 E Hickory St, Denton, Texas 76201

Steve Thomason, [steve@worksworld.com](mailto:steve@worksworld.com)

## FROM THE NEWSLETTER EDITOR - ARTHUR BARBER

Past newsletters can be accessed from the NEOWTA website [www.neowta.com/newsletter](http://www.neowta.com/newsletter).

If you don't have internet access, provide me with your mailing address, and I will print out a B&W copy, lick a stamp and mail the newsletter to you via U.S. Postal Service. A small fee of \$1.00 to cover costs.

If you do not receive a courtesy email by the beginning of the month indicating that a new newsletter is available online, please send me your current email address.

Submissions to the newsletter are due by the last Thursday of the month.

Articles, tips, web links, classified ads and other woodturning-related items are welcome! Send them to [newsletter@neowta.com](mailto:newsletter@neowta.com).

For other business inquiries, contact Northeastern Oklahoma Woodturners Association at:

NEOWTA  
10117 E 50th St.  
Tulsa, OK 74146

[www.neowta.com](http://www.neowta.com)

10117 E 50th St • Tulsa, OK 74146

## Pat Collins &amp; Dee Baxter



NEOWTA ON FACEBOOK

AAW

OFFICIAL CHAPTER  
AMERICAN ASSOCIATION  
OF WOODTURNERS

